



Unimark
Tickets To Go

For the Worldspan GoRes System

Driver Setup and Operation Manual

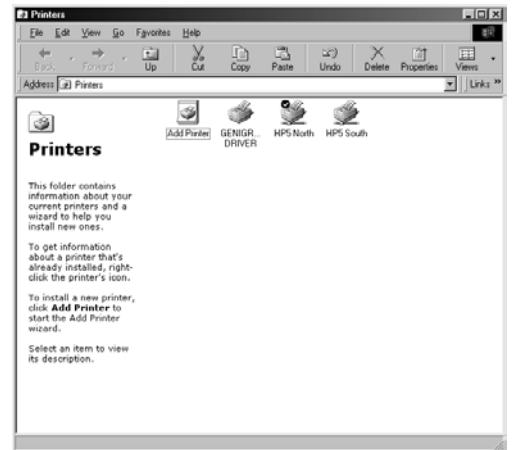
(for Microsoft® Windows 95/98)

© 2001 Unimark, Inc.
P/N: 71U-1421-000 REV A

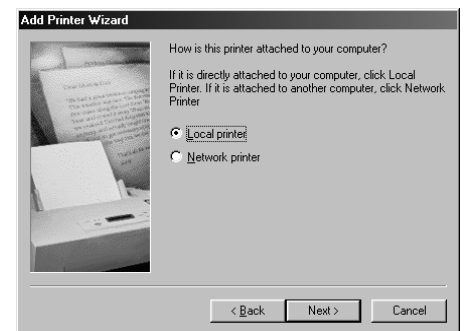
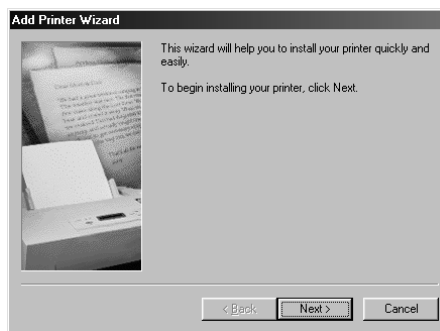
Equipment Requirements: One PC running MS Windows 95 or 98

SECTION I: Installing the Unimark TTG Driver

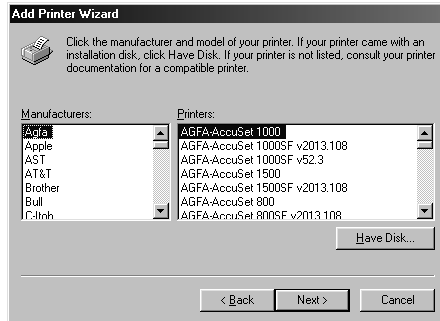
- 1.0: Install the TTG Driver Setup disk.
- 2.0: Access the Printers folder under Control Panel (views may vary from PC to PC).



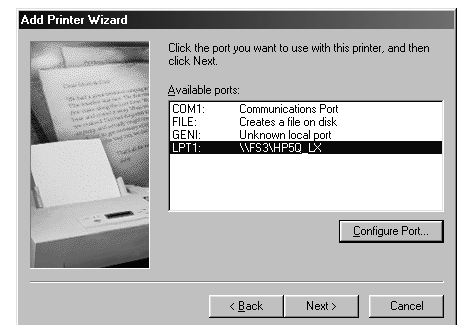
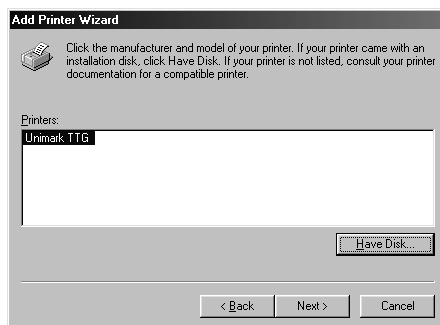
- 3.0: Double click on the Add Printer icon. This will launch the Add Printer Wizard.
- 4.0: Click on the Next button. Verify that Local Printer is selected.



- 5.0: Click on the Have Disk button.
- 6.0: Enter the path A:\ (or B:\ if the 3.5" disk is located in drive B) and click on the OK button.



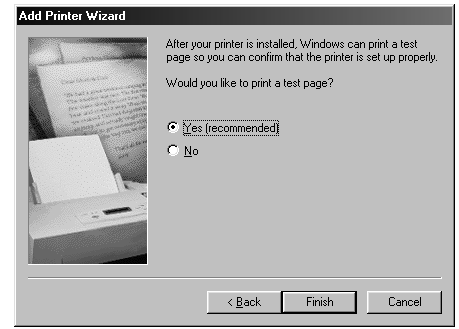
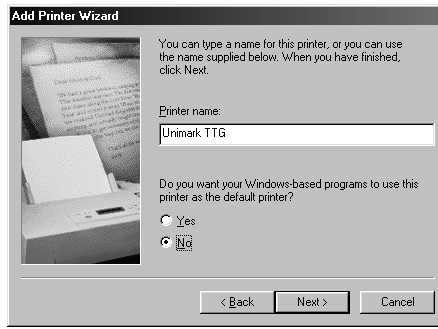
- 7.0: A display will appear indicating the printer drivers that were found. Click on Unimark TTG. Then click on the Next button.
- 8.0: Select the port that you want to drive the TTG printer from. Click on the Next button.



9.0 Type in a name for the printer, or you can leave it as Unimark TTG.

10.0 Verify that the printer IS NOT selected as the default Windows printer. Click on the Next button.

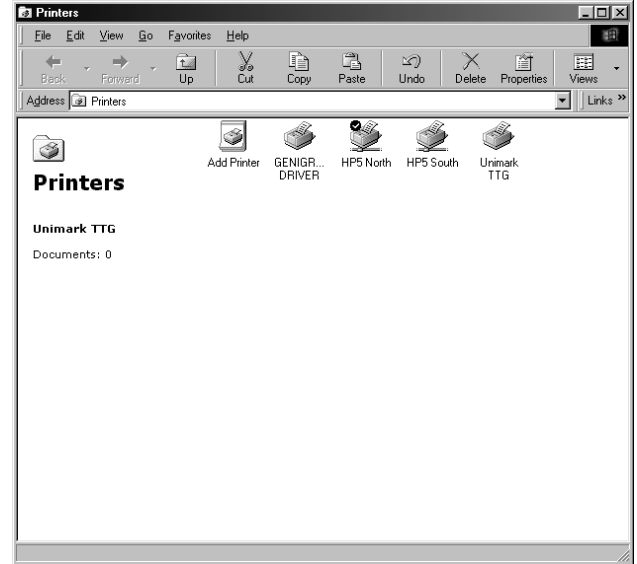
11.0 The next screen will ask if you want a test page to be printed after the driver is installed. Select Yes or No, then click on the Finish button.



12.0 The TTG driver will now be loaded onto your PC. This may take a few minutes. Once it is complete, the Unimark TTG printer icon will appear in the Printers folder.

13.0 If you are connected to the PC's parallel port you should be able to go directly to the GoRes Setup section (Section III) now.

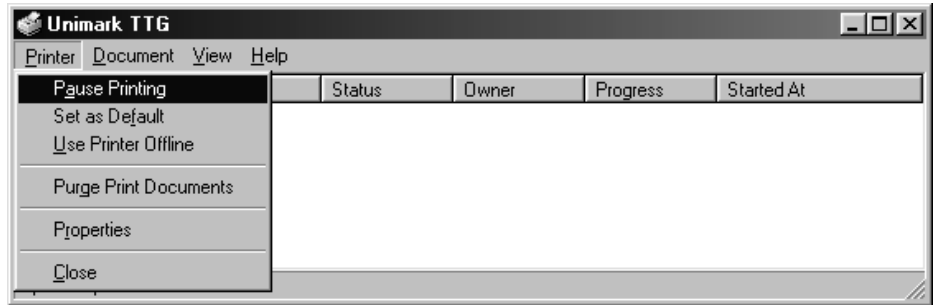
14.0 If your TTG is connected to the PC's serial port (COM1 or COM2 typically), you must go to the Serial Port Setup section (Section II) now.



SECTION II: Serial Port Setup

1.0: Double click on the Unimark TTG icon in the Printers folder.

2.0 Pull down the menu by selecting Printer from the top bar, and then select Properties.



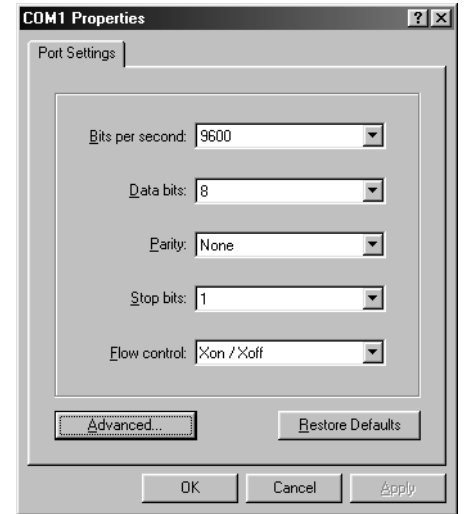
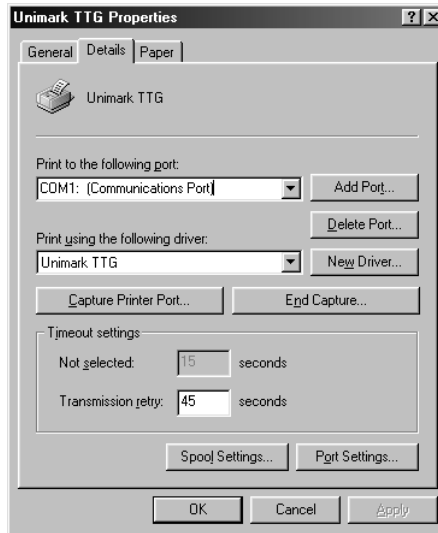
3.0 The Unimark TTG Properties box will appear. Select the Details tab.

4.0 From this screen you can select different ports if necessary. Verify the correct port is selected (example shows COM1).

5.0 From the Details page, click on the Port Settings button.

6.0 Change / Verify the COM port settings:

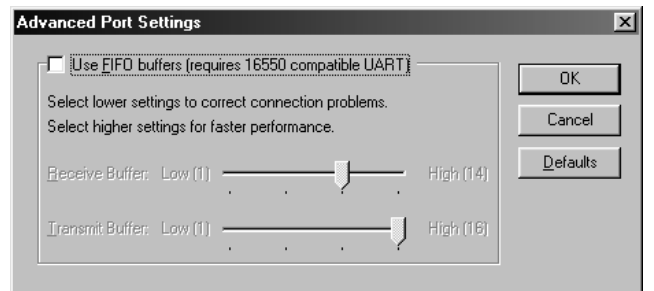
- 6.1 9600 BAUD
- 6.2 8 Data Bits
- 6.3 No Parity
- 6.4 1 Stop Bit
- 6.5 Xon/Xoff Flow Control



These settings match the TTG printer.

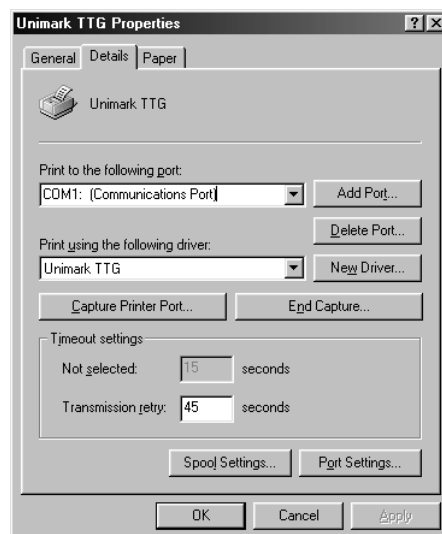
7.0 Click on the Advanced button on the COM Properties page. Verify that the Use FIFO buffers box is NOT checked.

8.0 Click on the OK button.



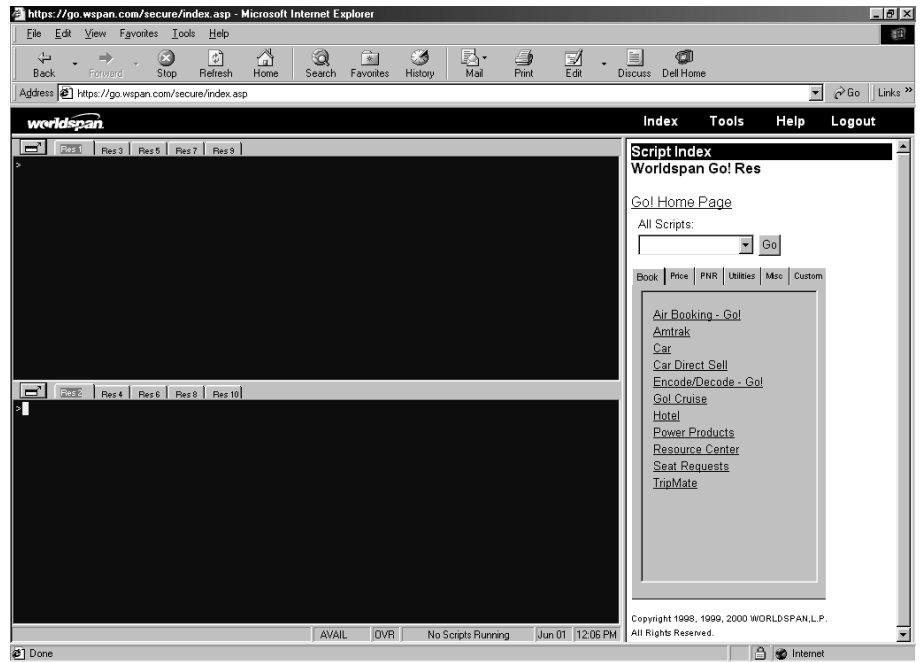
9.0 Click on the OK button. Click on the Apply button (may not be highlighted). Then click on the OK button.

10.0 Your PC should now be ready to talk to the TTG via the COM port.

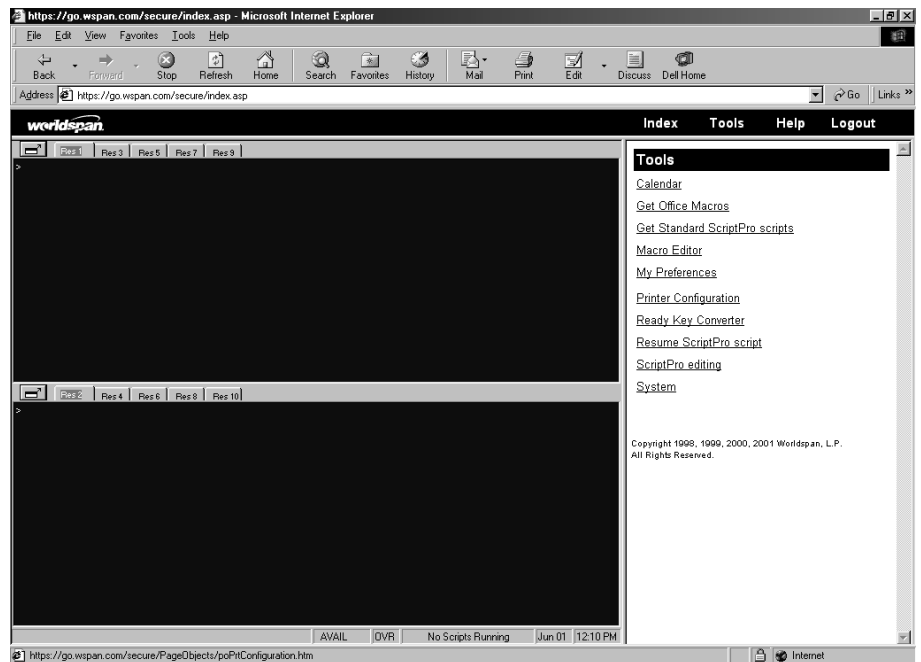


SECTION III: GoRes Setup

1.0: Log into Worldspan GoRes .



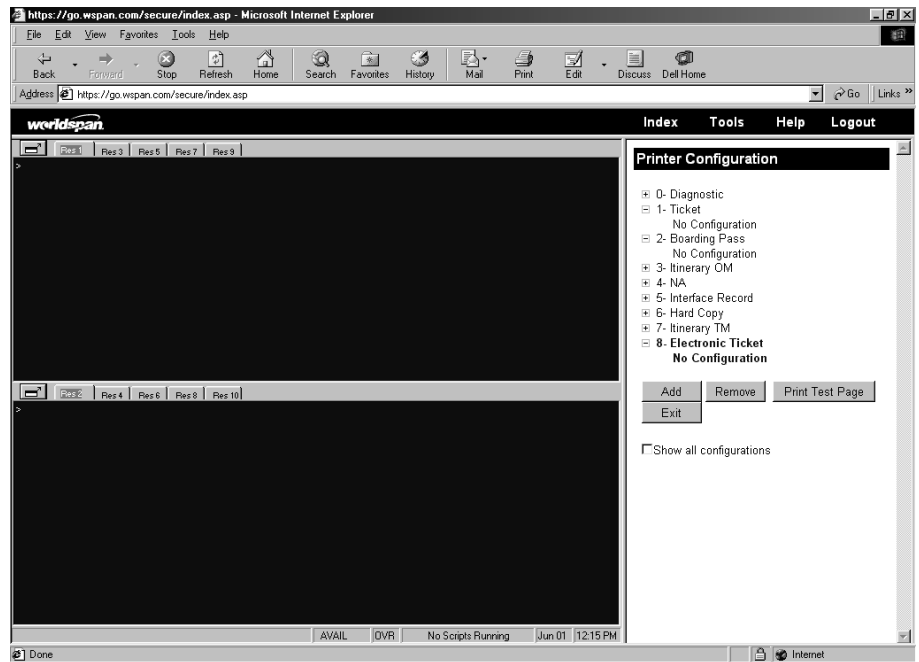
2.0 Select Tools from the Worldspan black control bar.



3.0 Select Printer Configuration from the Tools list.

4.0 The Printer Configuration list will be displayed.

5.0 Click on printer selections 1 (Ticket), 2 (Boarding Pass), and 8 (Electronic Ticket). Each printer selection will show the current configuration (typically No Configuration if no printer has been selected yet).



6.0 For each printer (1, 2 and 8), click on the Add button, which will pull up the Windows Printers – Web Page Dialog window.

7.0 Select Unimark TTG (or whatever name you gave it) by clicking on the name. The name will appear in bold. Click on the OK button to accept the printer selection.

8.0 After the printer has been selected, it will appear in the Printer Configuration screen under 1, 2, and 8 as shown below.



9.0 You may click on the Print Test Page button and verify your TTG printer is operating correctly.

10.0 Click on the Exit button to exit the Printer Configuration screen.

11.0 You are now ready to use the GoRes system and print tickets.

Your Unimark TTG printer is now configured and ready for use with Worldspan GoRes.

